

IMPORTANT: All results mentioned in this Preliminary document/report are PRELIMINARY results subject to changes or to confirmation in the FINAL document/report. You shall therefore NOT RELY on this PRELIMINARY report as an official confirmation of such results.

Preliminary Report No.: SZXEC24001700801 **Date:** Jun 04, 2024 **Page 1 of 8**

Client Name: SHENZHEN MATELIGHT ELECTRONICS CO.,LTD.
Client Address: UNIT 9C, 9/F, WEN WEI BUILDING, NO. 322 FUHUA ROAD, GANGXIA COMMUNITY, FUTIAN STREET, FUTIAN DISTRICT, SHENZHEN CITY, GUANGDONG PROVINCE

Sample Name: SMD LED
Model No.: MATE-C150XXX
Material No.: MATE-XXX
Client Ref. Information: MATE-0201XXX、MATE-C281XXX、MATE-C283XXX、
MATE-C19XXX、MATE-C190XXX、MATE-C191XX、
MATE-C193XXX、MATE-C195XXX
MMATE-C17XXX、MATE-C170XXX、MATE-C171XXX
MATE-C15XXX、MATE-C150XXX、MATE-C151XXX、
MATE-C155XXX MATE-3535XXX
MATE-T680XXX、MATE-2835XXX、MATE-5730XXX
MATE-C3014XXX MATE-3014XXX MATE-S3014XXX
MATE-5050XXX MATE-E682XXX MATE-E683XXX
MATE-E500XXX MATE-010XXX MATE-020XXX
MATE-335XXX MATE-4014XXX MATE-S4014XXX
MATE-C231XXX、MATE-C230XXX、MATE-S270XXX、
MATE-S220XXX MATE-S110XXX
MATE-S320XXX MATE-C930XXX MATE-3030XXX
MATE-C950XXX MATE-C990XXX MATE-2020XXX
MATE-S326XXX MATE-S115XXX MATE-C295XXX
MATE-M670XXX MATE-M140XXX MATE-2121XXX

The above sample(s) and information were provided by the client.

SGS Job No.: SZP24-023072
Sample Receiving Date: May 29, 2024
Testing Period: May 29, 2024 ~ Jun 04, 2024
Test Requested: Select test(s) as requested by the client.
Test Method(s): Please refer to next page(s).
Test Result(s): Please refer to next page(s).

Test Requirement	Conclusion
EU RoHS Directive (EU) 2015/863 amending Annex II to Directive 2011/65/EU - Lead, Mercury, Cadmium, Hexavalent chromium, Polybrominated biphenyls (PBB), Polybrominated diphenyl ethers (PBDE), Bis(2-ethylhexyl) phthalate (DEHP), Butyl benzyl phthalate (BBP), Dibutyl phthalate (DBP) and Diisobutyl phthalate (DIBP)	Pass

Test Result(s):

Test Part Description:

SN ID	Sample No.	SGS Sample ID	Description
SN1	A1	SZX24-0017008-0001.C001	"SMD LED"

Remarks:

- (1) 1 mg/kg = 1 ppm = 0.0001%
- (2) MDL = Method Detection Limit
- (3) ND = Not Detected (< MDL)
- (4) "-" = Not Regulated

EU RoHS Directive (EU) 2015/863 amending Annex II to Directive 2011/65/EU - Lead, Mercury, Cadmium, Hexavalent chromium, Polybrominated biphenyls (PBB), Polybrominated diphenyl ethers (PBDE), Bis(2-ethylhexyl) phthalate (DEHP), Butyl benzyl phthalate (BBP), Dibutyl phthalate (DBP) and Diisobutyl phthalate (DIBP)

Test Method: With reference to IEC 62321-4:2013+AMD1:2017, IEC 62321-5:2013, IEC 62321-7-2:2017, IEC 62321-6:2015 and IEC 62321-8:2017, analysis was performed by ICP-OES/AAS, UV-Vis and GC-MS.

Test Item(s)	Limit	Unit(s)	MDL	A1
Lead (Pb)	1000	mg/kg	2	ND
Mercury (Hg)	1000	mg/kg	2	ND
Cadmium (Cd)	100	mg/kg	2	ND
Hexavalent Chromium (Cr(VI))	1000	mg/kg	8	ND
Polybromobiphenyl (PBB)	1000	mg/kg	-	ND
Monobrominated biphenyl (MonoBB)	-	mg/kg	5	ND
Dibrominated biphenyl (DiBB)	-	mg/kg	5	ND
Tribrominated biphenyl (TriBB)	-	mg/kg	5	ND
Tetrabrominated biphenyl (TetraBB)	-	mg/kg	5	ND
Pentabrominated biphenyl (PentaBB)	-	mg/kg	5	ND
Hexabrominated biphenyl (HexaBB)	-	mg/kg	5	ND
Heptabrominated biphenyl (HeptaBB)	-	mg/kg	5	ND
Octabrominated biphenyl (OctaBB)	-	mg/kg	5	ND
Nonabrominated biphenyl (NonaBB)	-	mg/kg	5	ND
Decabrominated biphenyl (DecaBB)	-	mg/kg	5	ND
Polybromodiphenyl ether (PBDE)	1000	mg/kg	-	ND
Monobrominated diphenyl ether (MonoBDE)	-	mg/kg	5	ND
Dibrominated diphenyl ether (DiBDE)	-	mg/kg	5	ND
Tribrominated diphenyl ether (TriBDE)	-	mg/kg	5	ND
Tetrabrominated diphenyl ether (TetraBDE)	-	mg/kg	5	ND
Pentabrominated diphenyl ether (PentaBDE)	-	mg/kg	5	ND
Hexabrominated diphenyl ether (HexaBDE)	-	mg/kg	5	ND
Heptabrominated diphenyl ether (HeptaBDE)	-	mg/kg	5	ND
Octabrominated diphenyl ether (OctaBDE)	-	mg/kg	5	ND
Nonabrominated diphenyl ether (NonaBDE)	-	mg/kg	5	ND
Decabrominated diphenyl ether (DecaBDE)	-	mg/kg	5	ND
Bis-(2-ethylhexyl) Phthalate (DEHP)	1000	mg/kg	50	ND

Test Item(s)	Limit	Unit(s)	MDL	A1
Benzyl Butyl Phthalate(BBP)	1000	mg/kg	50	ND
Dibutyl Phthalate(DBP)	1000	mg/kg	50	ND
Diisobutyl Phthalate(DIBP)	1000	mg/kg	50	ND

Notes:

- (1) The maximum permissible limit is quoted from RoHS Directive (EU) 2015/863.
- (2) IEC 62321 series is equivalent to EN 62321 series.
- (3) The restriction of DEHP, BBP, DBP and DIBP shall apply to medical devices, including in vitro medical devices, and monitoring and control instruments, including industrial monitoring and control instruments, from 22 July 2021.

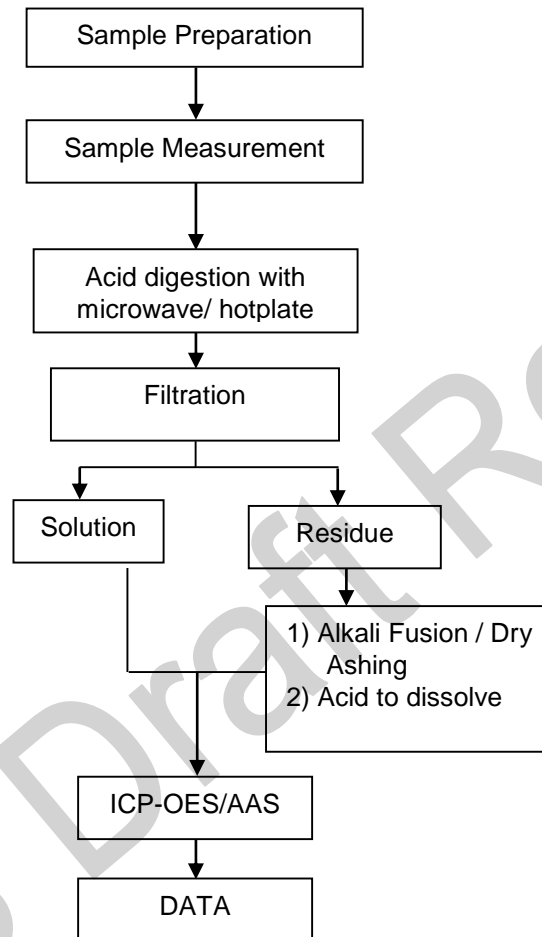
Unless otherwise stated, the decision rule for conformity reporting is based on Binary Statement for Simple Acceptance Rule ($w=0$) stated in ILAC-G8:09/2019.

SGS Draft Report

ATTACHMENTS

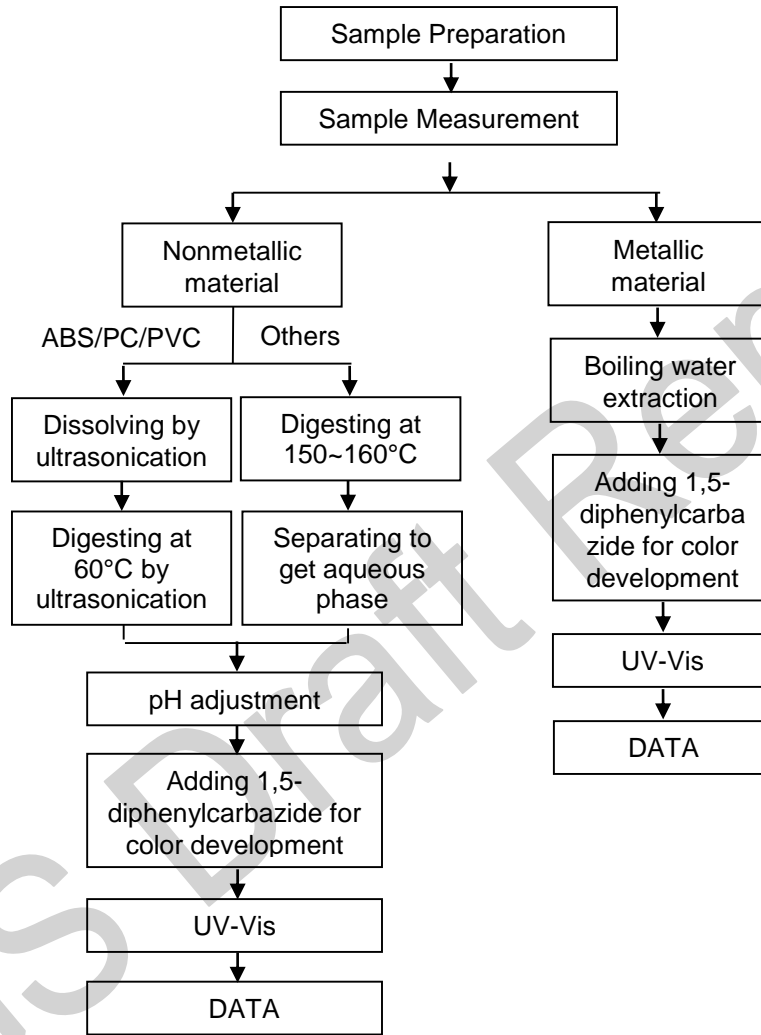
Elements Testing Flow Chart

These samples were dissolved totally by pre-conditioning method according to below flow chart.

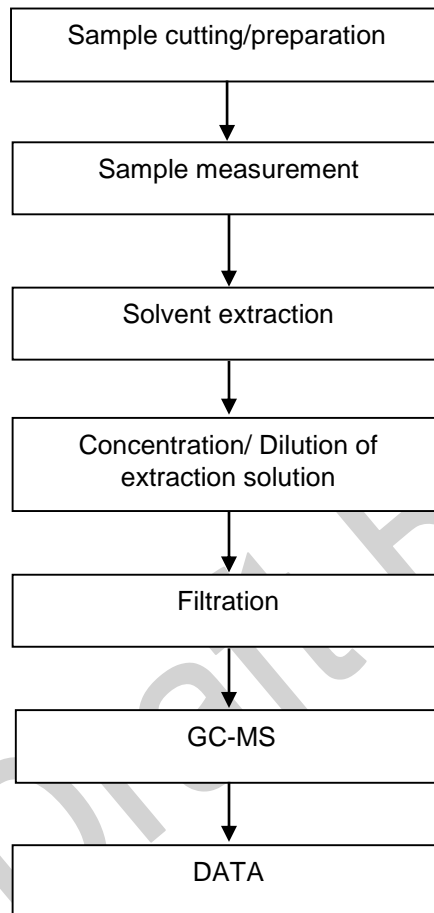


ATTACHMENTS

Hexavalent Chromium (Cr(VI)) Testing Flow Chart

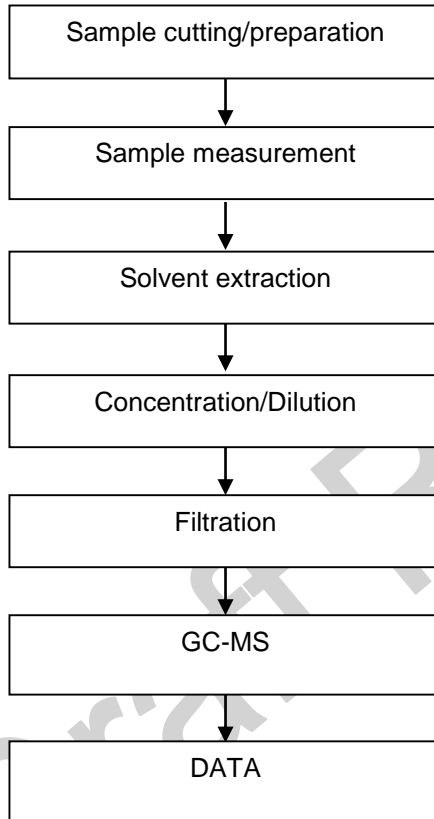


PBB/PBDE Testing Flow Chart



ATTACHMENTS

Phthalates Testing Flow Chart



Sample Photo:



SGS authenticate the photo on original report only
*** End of Report ***